

**LONDON**





LO STILE INTERNAZIONALE  
INCONTRA LE LINEE DELLA  
TRADIZIONE CARATTERIZZANDO  
LONDON, COLLEZIONE COMPOSTA  
DA SOSPENSIONI, APPLIQUE E  
PLAFONIERE. LA STRUTTURA,  
REALIZZATA IN FERRO ANTICATO,  
È RESA PERCEPIBILE DALLE  
TRASPARENZE DEL VETRO CREANDO  
COSÌ INASPETTATI CAMBI DI VISIONE  
IN UN'ATMOSFERA LEGGERA E DI  
GRANDE FASCINO.

THE INTERNATIONAL STYLE MEETS  
THE LINES OF THE TRADITION THUS  
OUTLINING LONDON, A COLLECTION  
COMPOSED OF SUSPENSIONS,  
APPLIQUES AND CEILING LAMPS.  
THE STRUCTURE, MADE OF  
ANTIQUÉ IRON, IS PERCEPTIBLE  
BY THE TRANSPARENCY OF GLASS,  
CREATING UNEXPECTED CHANGES  
OF VISION IN A SOFT AND OF GREAT  
CHARM ATMOSPHERE.























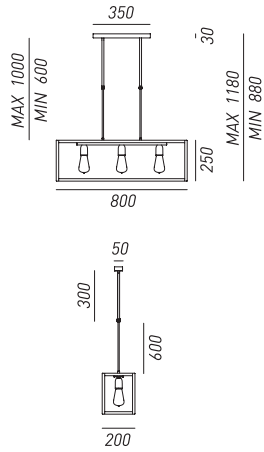




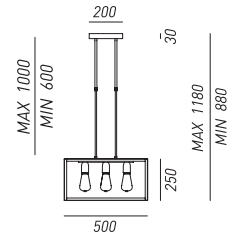




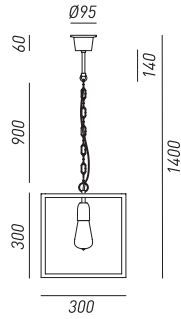
lampade / lamps



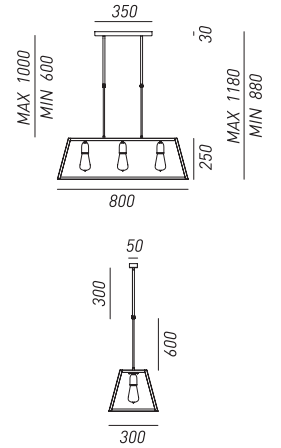
205.04.FF  
3x Max 77W E27



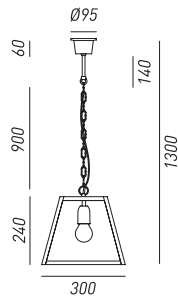
205.05.FF  
4x Max 77W E27



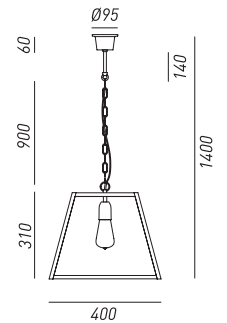
205.02.FF  
1x Max 77W E27



205.24.FF  
3x Max 77W E27



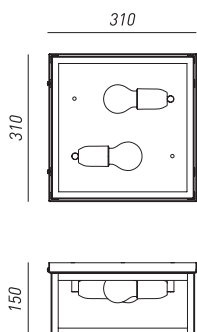
205.21.FF  
1x Max 77W E27



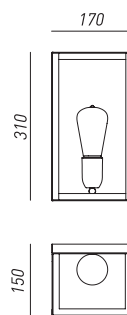
205.22.FF  
1x Max 77W E27



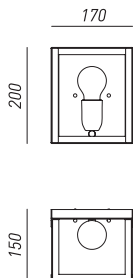
*lampade / lamps*



205.06.FF  
2x Max 46W E27 



205.09.FF  
1x Max 46W E27 



205.08.FF  
1x Max 46W E27 

*dettaglio rosoni / canopie's details*



205.04-24  
L 350 mm H 30 mm

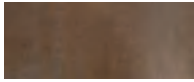


205.05  
L 200 mm H 30 mm



205.02-22-21  
Ø 95 mm H 60 mm

*finiture montatura / frame finishes*



FERRO  
IRON



VETRO TRASPARENTE  
TRANSPARENT GLASS